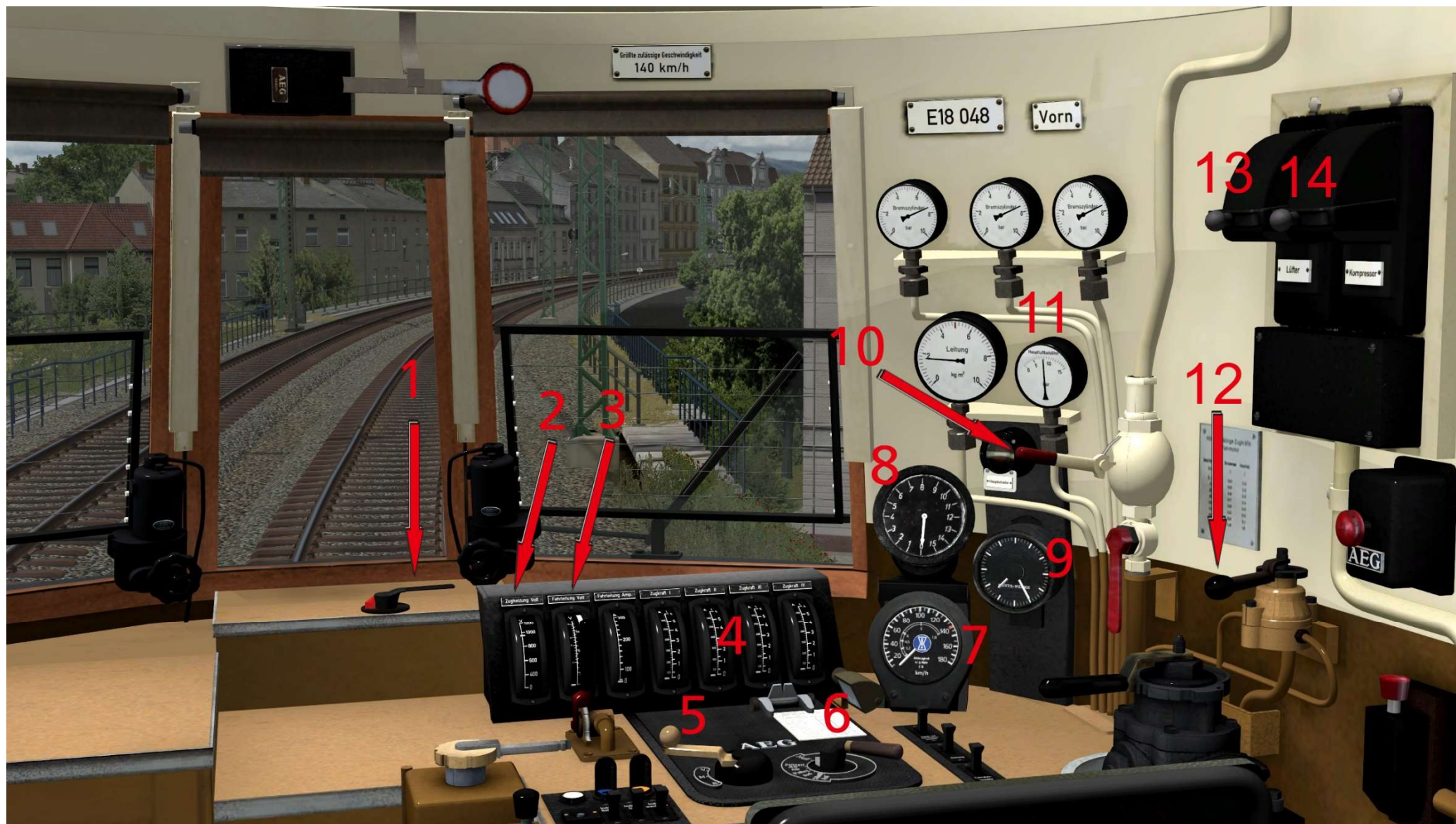


Documentation - Series E18, DB, Era III/V, steel blue – Shopset V15NAG30056

1. Driver`s cab



Animated and controllable driver's cab - control elements diagram

1 Operating lever for windscreen wipers

2 Train heater indicator (Volts) - active with clutch in "active" position and in clutch condition



3 Catenary indicator (Volts) – active when pantographs are extended

4 Indicators for the current tractive effort of motors 1 to 4 and catenary (Ampere)

5 Reverser selector lever (drive forwards/backwards control)

6 Throttle control lever

7 Speed indicator

8 Driving stage indicator

9 Clock

10 Operating lever for signal horn

11 Brake pressure indicator (brake pressure cylinders 1-3) and main line brake pressure

12 Control lever for locomotive brake

13 Selector lever for fans ("Engine") - only in the front driver's cab with animation

14 Compressor selector lever - only in the front cab with animation



E.g. tip text "Throttle"

Welcome to your new workplace - the driver's cab of the E18 series!

All operable controls described in the diagram are in the driver's cab view (call up via key 8) simply selected in EEP using the mouse pointer and moved by pressing the left mouse button. The shift key is used in addition to the left mouse button to reset the controls. All controls are also provided with a tip text in the driver's cab view, so that you can easily recognize which element you just control.

2. Locomotive variants in a set



E18 047

- Running gear in fire red, RAL 3000
- Current collector SBS 39 with rocker WBS 54
- Headlamps old
- Inscription function
- Animated and controllable cabs
- Inductive train safety "Indusi54", fire red
- Individual engine driver in DB uniform
- Animated windshield wipers
- Zierstreifen umlaufend, Schürze unten

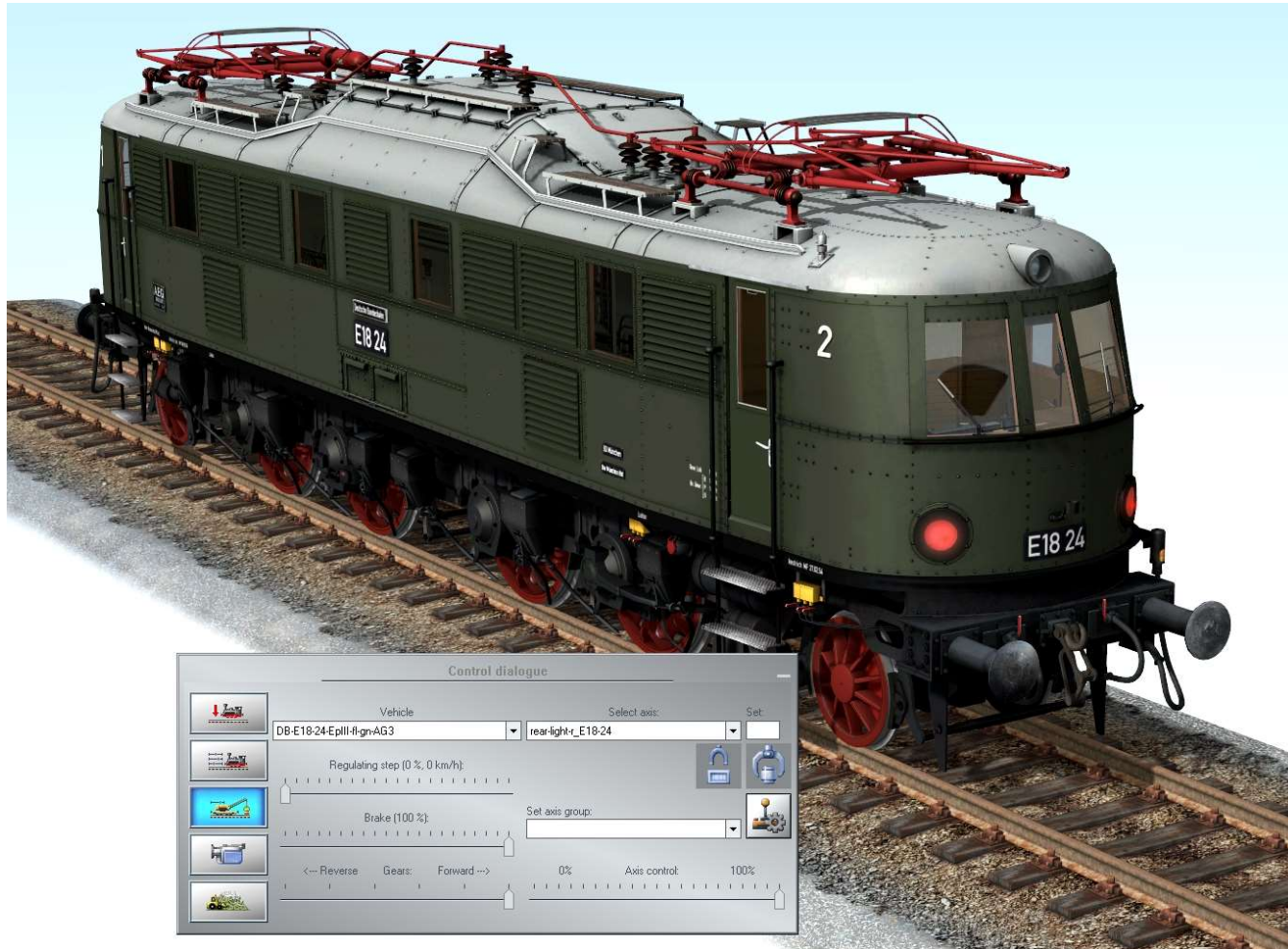


E18 35

- Running gear in black
- Current collector SBS 39 with rocker WBS 54
- Headlamps old
- Inscription function
- Animated and controllable cabs
- Inductive train safety "Indusi54", black
- Individual engine driver in DB uniform
- Animated windshield wipers
- Decorative stripes in the middle of the front

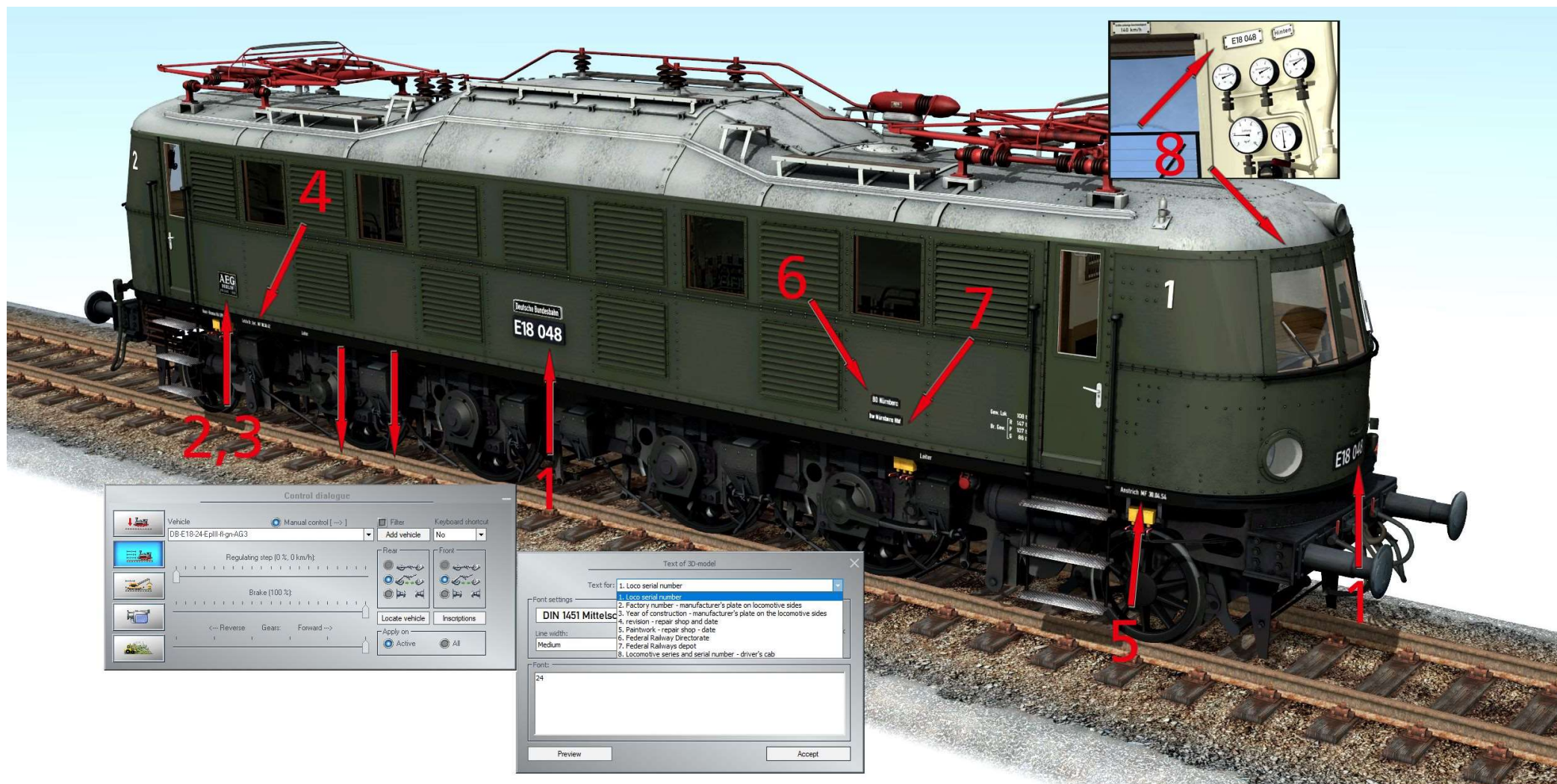
Special feature - train end signal – E18 048 & E18 24

The train end signals at the front and rear are designed as attachable discs, just like on the original locomotives. The end-of-train signals must therefore be switched manually via the axis dialog/slider. The associated axis dialog can be seen in the following diagram.



3. Inscription function

All three locomotive variants contained in the set have the inscription function. This gives you the opportunity to "recreate" all E18 locomotives of Era III on your layout. The areas that can be written on are explained in the following diagram.



Important NOTE:

The following fonts are used for the labeling function, which must be installed on your PC for the models to be displayed correctly:

- **Antiqua**
- **DIN 1451 Mittelschrift DB**
- **DIN 1451 Engschrift**
- **Myriad Pro Light**

The fonts can be downloaded here free of charge:

<https://www.free-fonts.com/de/antiqua>

<https://www.free-fonts.com/de/din-1451-mittelschrift-db>

<https://www.free-fonts.com/de/din-1451-engschrift>

<https://www.free-fonts.com/de/myriad-pro-light>

!!! RECOMMENDATION !!!

In order to be able to experience and enjoy the complete attention to detail of the E18 models, I recommend that you select "Winter" under "Environmental settings" when setting the seasons - this is the only way to fully experience the many details of the machines, especially in the area of the running gear.

I hope you enjoy the model!

**Yours,
Alexander Geist (AG3)**