

Historisches College - Erweiterungsset

1. Beschreibung

Dieses Set enthält zusätzliche Komponenten für das Set V14NNR10035.



2. Teile

Das Konstruktionsprinzip ist einfach : bewege die Teile nebeneinander und lasse sie zusammen andocken.

Übersicht der Gebäudeteile :

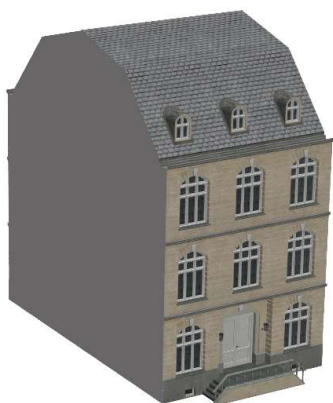
(MN = Modellname / EEPN = EEP-name)



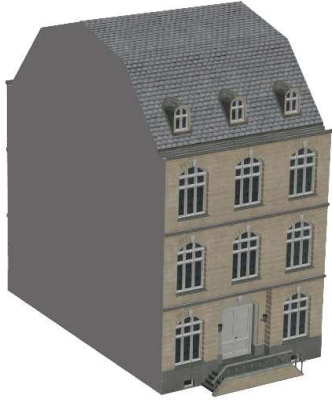
MN = HISCOL_KE_NR1.3dm
EEPN = Historisches College - Block Kupplung typ E



MN = HISCOL_KE3_NR1.3dm
EEPN = Historisches College - Block Kupplung typ E3



MN = HISCOL_3xR1T_T_NR1.3dm
EEPN = Historisches College - Block 3x mit 1 Tür (2)



MN = HISCOL_3x2T_T_NR1.3dm
EEPN = Historisches College - Block 3x mit 2 Türen (2)



MN = HISCOL_HE_T_NR1.3dm
EEPN = Historisches College - Haupteingang (2)



MN = HISCOL_FALLROHR3_NR1.3dm
EEPN = Historisches College - Fallrohr (2)

Historical college – Expansion set

1. Description

This set contains additional components for the set V14NNR10035.



2. Parts

The construction principle is simple : move the parts next to each other and let them dock together.

Overview of the building parts :

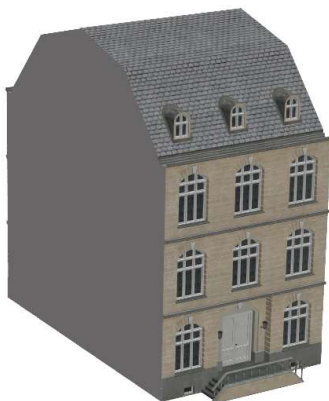
(MN = Model name / EEPN = EEP-name)



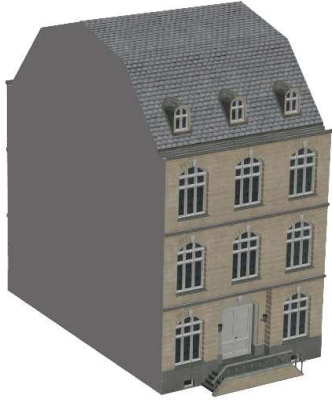
MN = HISCOL_KE_NR1.3dm
EEPN = Historical college - block coupling type E



MN = HISCOL_KE3_NR1.3dm
EEPN = Historical college - block coupling type E3



MN = HISCOL_3xR1T_T_NR1.3dm
EEPN = Historical College - block 3x with 1 door (2)



MN = HISCOL_3x2T_T_NR1.3dm
EEN = Historical College - block 3x with 2 doors (2)



MN = HISCOL_HE_T_NR1.3dm
EEN = Historical College – main entrance (2)



MN = HISCOL_FALLROHR3_NR1.3dm
EEN = Historical college – rain drainage (2)

Collège historique - Kit d'extension

1. Description

Cet ensemble contient des composants supplémentaires pour l'ensemble V14NNR10035.



2. Pièces

Le principe de construction est simple : déplacez les pièces l'une à côté de l'autre et laissez-les s'accrocher ensemble.

Vue d'ensemble des pièces du bâtiment :

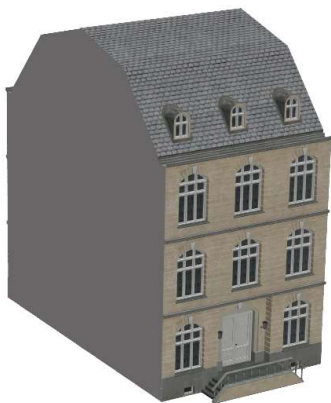
(MN = nom du modèle / EEPN = nom EEP)



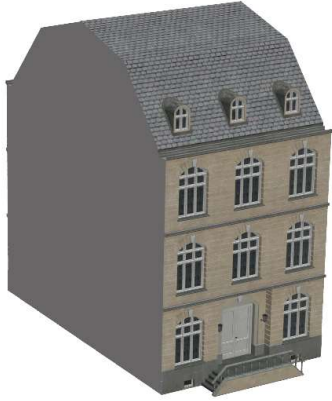
MN = HISCOL_KE_NR1.3dm
EEPN = Collège historique - bloc de couplage type E



MN = HISCOL_KE3_NR1.3dm
EEPN = Collège historique - bloc de couplage type E3



MN = HISCOL_3xR1T_T_NR1.3dm
EEPN = Collège historique - bloc 3x avec 1 porte (2)



MN = HISCOL_3x2T_T_NR1.3dm
EEN = Collège historique - bloc 3x avec 2 portes (2)



MN = HISCOL_HE_T_NR1.3dm
EEN = Collège historique – entrée principale



MN = HISCOL_FALLROHR3_NR1.3dm
EEN = Collège historique - drainage de la pluie (2)

Historyczna szkoła wyższa - Zestaw rozszerzający

1. Opis

Ten zestaw zawiera dodatkowe elementy do zestawu V14NNR10035.



2. Części

Zasada konstrukcji jest prosta : przesuвай części obok siebie i pozwól im zadokować razem.

Przegląd części budynku :

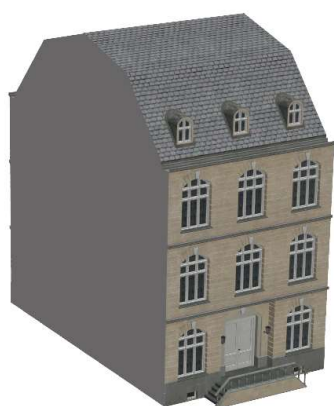
(MN = nazwa modelu / EEPN = nazwa EEP)



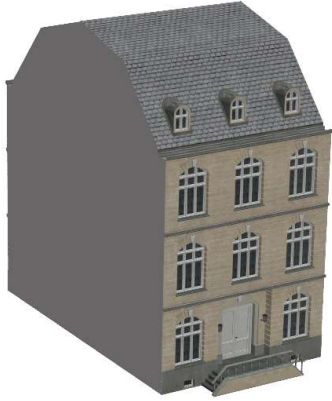
MN = HISCOL_KE_NR1.3dm
EEPN = Historyczna szkoła wyższa - złączka blokowa typu E



MN = HISCOL_KE3_NR1.3dm
EEPN = Historyczna szkoła wyższa - złączka blokowa typu E3



MN = HISCOL_3xR1T_T_NR1.3dm
EEPN = Historyczna szkoła wyższa - blok 3x z 1 drzwiami (2)



MN = HISCOL_3x2T_T_NR1.3dm

EEPN = Historyczna szkola wyzsza - blok 3x z 1 drzwiami (2)



MN = HISCOL_HE_T_NR1.3dm

EEPN = Historyczna szkola wyzsza – glowne wejście



MN = HISCOL_FALLROHR3_NR1.3dm

EEPN = Historyczna szkola wyzsza – odprowadzanie deszczu (2)