

▶ Most successful railway simulation:  
over 1.2 million sold

▶ More than 910,000 hours  
of development

▶ 30 years of  
railway experience

# EEP 17 eisenbahn.exe expert

## The leading railway construction and control simulation



The leading railway construction and control simulation, multilingual as **german** **english** & **french** version Started as a project by two students, EEP has developed into a construction and control simulation around the world of railways, which has been on the international market in three languages since EEP 15. As a result of the long-standing and good cooperation of designers, developers and railroad enthusiasts, with EEP,



New top models: passenger trains - series 654 Alstom „Coradia iLint“

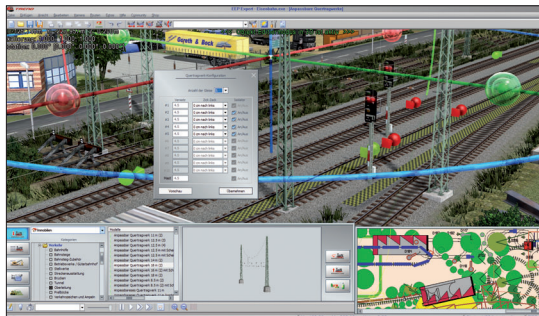
a construction and control simulation was created, in which it is possible for you to create an individual and realistic-looking model world through a **complex traffic route system with rails, roads, air and waterways**. This virtual world is rounded off by a steadily growing range of **partially even animated people, rolling stock, animals and plants**, as well as **real estate and landscape elements of all kinds**.



bridges & viaducts adjustable in length and radius



track construction



configurable cross span assemblies



Skydome

### System requirements: online registration required

Minimum: Windows 10 (64 Bit), 2,5GHz Dual-Core Processor, 1GB graphics card with Pixelshader 3.0, DirectX 9.0c, 4 GB RAM, DVD reader, sound card 2.0, 12 GB of available hard drive space, internet access and mail address for online registration.

Recommended: Windows 10 (64 Bit), 3,2GHz Quad-Core Processor, 2GB graphics card with Pixelshader 5.0, DirectX 9.0c, 16 GB RAM, DVD reader, sound card 5.1, 12 GB of available hard drive space, internet access and mail address for online registration

### The most important innovations of EEP17 Expert

The new edition of the most popular German railway simulation contains many new and innovative functions to push the boundaries of realism even further:

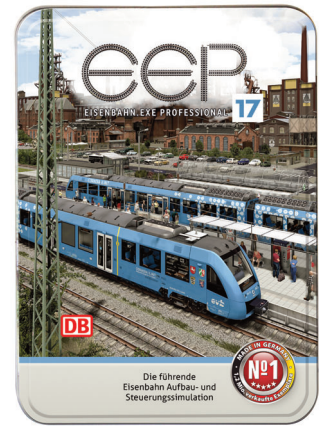
- ▶ **New TOP models:** two complete train sets of the world's first Alstom "Coradia iLint" passenger train, which are operated with environmentally friendly and CO<sup>2</sup>-neutral hydrogen fuel cells. (Corona version 2020/2021).
- ▶ **Completely redesigned ICE4 train set BR412** with the multiple unit number 9005 as „ICE 582“
- ▶ **Numerous new models on the subject of hydrogen mobility**
- ▶ **over 100 new models from different topics:** animated EKW's and DKW's; Bridge cranes with moveable cargo; Railway station "Baden-Baden"; various track construction and Track maintenance machines and more...
- ▶ **Improved editor functionalities in many areas:** e.g. setting up models according to predefined rules; automatic docking of real estate and landscape elements to other models; simplified, automatic turnout construction and much more.
- ▶ **Configurable cross span assemblies** for up to 9 tracks
- ▶ **Improved sound features** for cabin views
- ▶ **3D track** (bridges adjustable in length and radius)
- ▶ **30 new Lua-functions**

### EEP Features

- ▶ Complete railway simulation including all traffic roads
- ▶ Extremely realistic all the way down to the smallest detail
- ▶ Comfortable editing of the tracks in 2D and 3D
- ▶ Immediate switch between editor and simulation
- ▶ Steerable driver's cabins
- ▶ Cargo loading and animated people
- ▶ Track control desks and routes
- ▶ Lua scripting language with a large command set
- ▶ Thousands of ready-to-use 3D models included
- ▶ Can be extended with a myriad of models, layouts and tools
- ▶ Video tutorials and tutorial layouts for a quick start

### Scope of delivery:

- ▶ DVD-ROM for PC-Windows (English - French - German)
- ▶ **Immediately operational model layouts**
- ▶ **Ready-made scenarios** for a quick start
- ▶ New top models: Coradia iLint EVB-BR654-101-4, EVB-BR654-102-2, EVB-BR654-601-3 and EVB-BR654-602-1 A
- ▶ **great variety of 3D models** (real estate, vegetation, rolling stock, etc.)
- ▶ **Detailed manuals** (PDF) in German, English and French
- ▶ DS/DV common signal book of the DeutschenBahn AG (PDF).



## The leading railway construction and control simulation



RRP: EUR 69,99

Release: 11/10 2021

ArticleNo.: 1102402

EAN



**EISENBahn KURIER**  
VORLIEF UND MODELL

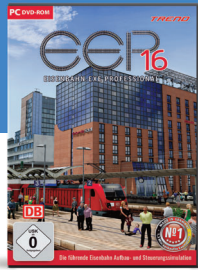
„Mit EEP kann man sich hervorragend in virtuellen Welten bewegen...Hoher Spaßfaktor!“  
Getestet wurde EEP 11

**TREND**

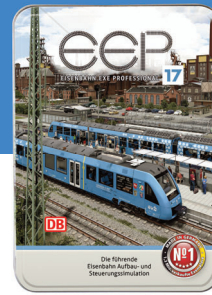
Trend Redaktions- und Verlagsgesellschaft mbH  
PEARL-Strasse 1-3  
79426 Buggingen / Germany

Discover the world  
of railways  
[www.eep.eu](http://www.eep.eu)

# Comparison EEP16



# EEP17 Expert

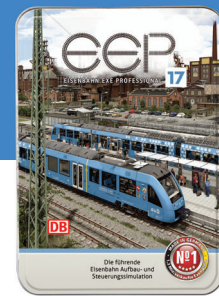


		EEP 16	EEP 17
<b>in general</b>	<b>NEW:</b> New TOP models: two complete train sets of the world's first Alstom "Coradia iLint" passenger train, which are operated with environmentally friendly and CO <sup>2</sup> -neutral hydrogen fuel cells. (Corona version 2020/2021).	✗	✓
	<b>NEW:</b> Completely redesigned ICE4 train set BR412 with the multiple unit number 9005 "ICE 582" Munich Central - Hamburg Altona (13 part train set)	✗	✓
	<b>NEW:</b> Over 100 new models from various themes: animated SST (Single Slip Turnouts) and DST (Double Slip Turnouts); bridge cranes with movable load; train station "Baden-Baden"; various track construction and track maintenance machines, etc.	✗	✓
	<b>NEW:</b> Improved editor functionalities in many areas: e.g. setting up models according to predefined rules; automatic docking of real estate and landscape elements to other models; simplified, automatic turnout construction and much more.	✗	✓
	<b>NEW:</b> Configurable cross span assemblies for up to 9 tracks	✗	✓
	<b>NEU:</b> The execution of commands at contact points can be time-controlled allowed or prohibited.	✗	✓
	<b>NEW:</b> A "is not" negation filter has been added to all contact points.	✗	✓
	<b>NEW:</b> 3D tracks (viaducts and bridges whose length and curvature can be adjusted)	✗	✓
	<b>NEW:</b> Control of vehicle axles in groups.	✗	✓
	<b>NEW:</b> Additional option for time-controlled, automatic backup of layout files.	✗	✓
	<b>NEW:</b> Scaling of height bitmaps in 2D and 3D - now also possible with 16-bit bitmaps.	✗	✓
	<b>NEW:</b> Saved trains (RSS files) - now with the position of the loaded goods.	✗	✓
	<b>NEW:</b> Multilingual version of the program and manual in English, German and French	✗	✓
<b>LUA-scripting</b>	Number of operational layouts	7	7
	LUA-Editor	✓	✓
	<b>NEW:</b> 30 new Lua functions	✗	✓
	<b>NEW:</b> Extension of the existing Lua function by „EEPSetPerspectiveCamera()“.	✗	✓
	<b>NEW:</b> Interface for using an external editor to create Lua scripts.	✗	✓
<b>layout construction</b>	<b>NEW:</b> Optical identification (differentiation) of contact points that contain a reference to an LUA function. The distinction is made both in 2- and in 3D.	✗	✓
	<b>NEW:</b> Switchable display (visibility) of the grid lines of the terrain wire frame in 3D.	✗	✓
	<b>NEW:</b> Show and hide lof locked objects.	✗	✓
	<b>NEW:</b> Complete unlock for all locked objects.	✗	✓
	<b>NEW:</b> New curve shape for splines: "Clothoide".	✗	✓
	<b>NEW:</b> Offset of the grid wireframe and a new 3D grid.	✗	✓
	<b>NEW:</b> Adjustment option of the terrain height for a route in the 3D editor.		
	<b>NEW:</b> Automatic adjustment of the set-up angle of objects, which is based on the slope of the terrain.	✗	✓
	<b>NEW:</b> Geometric optimization (deformation) of objects whose shape is adapted to the terrain surface (e.g. a fence or a wall on a mountain slope).	✗	✓
	<b>NEW:</b> Construction of track connections (closing track gaps) in 3D editing mode.	✗	✓
	<b>NEW:</b> Establishment and display of corresponding, virtual connections in 3D processing mode.	✗	✓
	<b>NEW:</b> The relative installation height and the angle of a signal to the roadway can be adjusted in 3D.	✗	✓
	<b>NEW:</b> Distance between the stop line and the signal can be edited in 3D.	✗	✓
	<b>NEW:</b> Blocking a track connection at the beginning or at the end of a route.	✗	✓
	<b>NEW:</b> Display contact filters for routes in the Edit Route dialog in edit mode. Selection of contact points according to "Routes".	✗	✓
	<b>NEW:</b> Laying "endless tracks" in one level.	✗	✓
	<b>NEW:</b> Height offset in "Height Maps".	✗	✓
User text texture for signals, tracks, real estate, landscape objects, goods, vehicles.	✓	✓	

# Comparison EEP16



# EEP 17 Expert



		EEP16	EEP 17
<b>driving</b>	Tip text editor for models and inscriptions in models	✓	✓
	GBS (Control Desk Editor).	✓	✓
	Two plan window displays.	✓	✓
	Lock / unlock individual objects (click and selection protection in 2D / 3D).	✓	✓
	<b>NEW:</b> Function in 3D mode to turn a single vehicle in a train.	✗	✓
	<b>NEW:</b> Entire train can be controlled in manual mode.	✗	✓
	<b>NEW:</b> Animation of track construction works.	✗	✓
	<b>NEW:</b> Turnout switching function that automatically changes its own state to the previously specified position after it has been passed over.	✗	✓
	<b>NEW:</b> 3 new splines with variable areas.	✗	✓
	<b>NEW:</b> Contact points have a selective effect on the objects to be controlled.	✗	✓
	<b>NEW:</b> New track construction vehicles with specific functions in 5 sets.	✗	✓
	Automatic / manual mode for vehicle contact points.	✓	✓
	Animated, operable engine driver's cabs for certain locomotives	✓	✓
	Control via gamepad and track diagram control panel (GBS) possible.	✓	✓
	Automatic slowing down of locomotives when approaching wagons.	✓	✓
<b>camera/ video</b>	Automatic anti-collision monitoring.	✓	✓
	Editability of driving characteristics and self-defined sounds.	✓	✓
	Importable and editable timetables.	✓	✓
	<b>NEW:</b> Camera zoom while holding the [^] key.	✗	✓
	<b>NEW:</b> Saving images (screenshots) in * .bmp or * .jpg format.	✗	✓
	<b>NEW:</b> In "Walker" mode, the camera follows the shape of the terrain.	✗	✓
	<b>NEW:</b> Contact point for the camera for a very specific vehicle.	✗	✓
	Separate storage path for recording videos and images.	✓	✓
	In-program film creation with professional cross-fading effects.	✓	✓
	Static, dynamic, and mobile types of cameras.	✓	✓
	Camera settings (focal length, focus, depth of field).	✓	✓
	User-defined camera positions in vehicles.	✓	✓
	Camera control via contact point and timer.	✓	✓
	Hide objects close to the camera.	✓	✓
	<b>display options/ features</b>	Draft effect and trembling of the camera tripod when trains passing by.	✓
<b>NEW:</b> „Skydome“ - Sky, environment and space for the railway layout.		✗	✓
<b>NEW:</b> Animation of construction works.		✗	✓
<b>NEW:</b> Creation of screenshots of the 3D environment without displayed values, information, name labels and other additional texts.		✗	✓
<b>NEW:</b> Better display of white lines in the radar window.		✗	✓
Animated water and animated floating objects.		✓	✓
SSAO technology for clearer shadowing.		✓	✓
Splash water and dust effects on wet roads.		✓	✓
Movement in landscape objects (kinematic animation).		✓	✓
Doubling the range of vision.		✓	✓
<b>addition</b>	3D illustration (for red / cyan anaglyph 3D glasses).	✓	✓
	„True Colors“ for true-to-life color reproduction.	✓	✓
	<b>NEW:</b> Signals can be edited in height and rotated around the z-axis	✗	✓
	<b>NEW:</b> Hold the height when copying objects with "Ctrl + C"	✗	✓
	<b>NEW:</b> improved sound features for cabin views	✗	✓